

R O W A N

# Ambergate

By Marie Wallin



# Ambergate

by Marie Wallin



## YARN

### Cocoon

4 x 100gm

(photographed in Alpine 802)

## NEEDLES

1 pair 6mm (no 4) (US 10) needles

1 pair 7mm (no 2) (US 10½) needles

Cable needle

## TENSION

20 sts and 16 rows to 10 cm measured over patt using 7mm (US 10½) needles.

## FINISHED SIZE

Completed wrap is 42 cm (16½ in) wide and 108 cm (42½ in) long.

## SPECIAL ABBREVIATIONS

**C6B** = slip next 3 sts onto cable needle and leave at back of work, K3, then K3 from cable needle; **C6F** = slip next 3 sts onto cable needle and leave at front of work, K3, then K3 from cable needle; **Cr4L** = slip next 3 sts onto cable needle and leave at front of work, P1, then K3 from cable needle; **Cr4R** = slip next st onto cable needle and leave at back of work, K3, then P1 from cable needle; **Cr5L** = slip next 3 sts onto cable needle and leave at front of work, P2, then K3 from cable needle; **Cr5R** = slip next 2 sts onto cable needle and leave at back of work, K3, then P2 from cable needle.

## WRAP

Using 6mm (US 10) needles cast on 84 sts.

**Row 1 (RS):** K3, \*P2, K2, rep from \* to last st, K1.

**Row 2:** K1, P2, \*K2, P2, rep from \* to last st, K1.

These 2 rows form rib.

Work in rib for a further 6 rows, ending with RS facing for next row.

Change to 7mm (US 10½) needles.

Beg and ending rows as indicated, repeating the 24 st patt rep 3 times across each row and repeating the 52 row patt rep throughout, now work in patt from chart as folls:

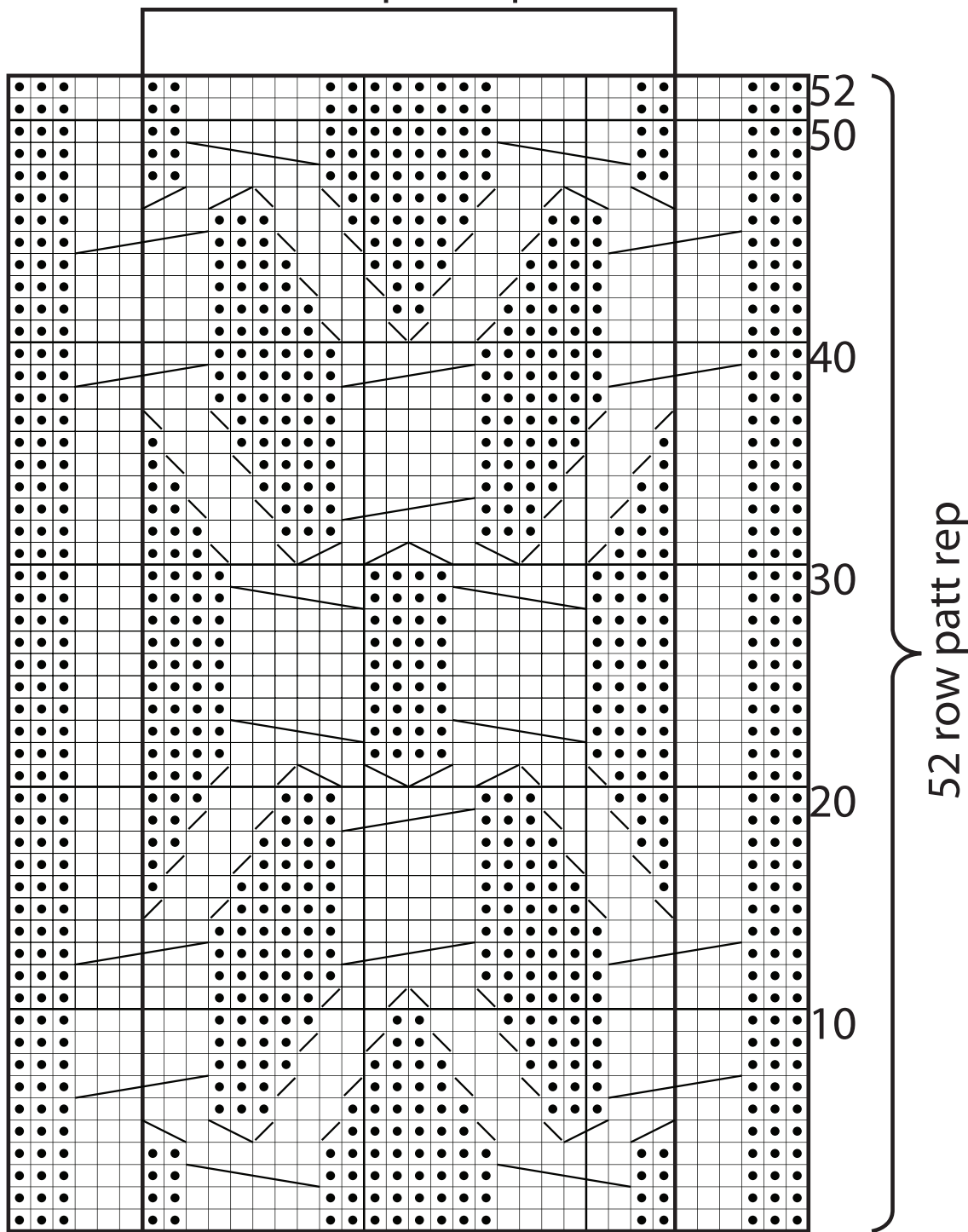
Work all 52 rows of chart 3 times, ending with RS facing for next row.

Change to 6mm (US 10) needles.

Beg with row 1, work in rib for 8 rows, ending with RS facing for next row.

Cast off in rib.

# 24 st patt rep



## key

- K on RS, P on WS
- P on RS, K on WS
- ▧ Cr4R
- ▨ Cr4L
- ▩ Cr5R
- Cr5L
- C6B
- ▬ C6F

All right reserved. Reproduction in whole or any part of all material, including illustrations, in this publication is strictly forbidden. No part may be reproduced, stored in a retrieval system, or transmitted in any form or by any means electronic, electrostatic, magnetic tape, mechanical, photocopying, recording or otherwise without prior permission of the copyright owners having been given in writing.  
 The designs in this publication are copyrighted and must not be knitted for re-sale. Reproduction of this publication is protected by copyright and is sold on the condition that it is used for non commercial purposes. Yarn quantities are approximate as they are based on average requirements. Please note images are for guidance only. Colours may not display accurately on screen or in printed format. Contact your local stockist to view a fringed (not digital reproduction) yarn shade card.