

# R O W A N

## Cotton Throw



### YARN

#### Rowan Cotton Glace

A Ecrú	725	18	x	50gm
B Pepper	796	5	x	50gm
C Butter	795	5	x	50gm
D Candy Floss	747	5	x	50gm

### NEEDLES

1 pair 3¼mm (no 10) (US 3) needles

### TENSION

23 sts and 32 rows to 10 cm measured over stocking stitch using 3¼mm (US 3) needles.

### FINISHED SIZE

Completed throw is approx 145 cm (57 in) square.

### SPOT PANELS (make 5)

Cast on 97 sts using 3¼mm (US 3) needles and yarn A.

Beg with a K row, work in st st as folls:

Work 6 rows, ending with a WS row.

\*Using a separate ball of yarn for each block of colour and twisting yarns tog on WS where they meet to avoid holes forming, cont in patt foll chart until all 37 rows have been worked, ending with a RS row.

Using yarn A and beg with a P row, work 6 rows.\*

Now working odd numbers rows as P rows, reading chart from left to right, and even numbered rows as K rows, reading chart from right to left, work 37 rows foll chart **using yarn C in place of yarn D, yarn B in place of yarn C and yarn D in place of yarn B.**

Using yarn A and beg with a K row, work 6 rows. Rep from \* to \* once more.

Cast off (on WS).

### STRIPE PANELS (make 4)

Cast on 97 sts using 3¼mm (US 3) needles and yarn D.

Beg with a K row, work in st st in stripes as folls:

**Rows 1 to 5:** Using yarn D.

**Rows 6 to 8:** Using yarn A.

**Rows 9 to 16:** using yarn B.

**Rows 17 to 20:** Using yarn A.

**Rows 21 to 23:** Using yarn C.

**Rows 24 to 27:** Using yarn A.

**Rows 28 to 32:** Using yarn D.

**Rows 33 and 34:** Using yarn A.

**Rows 35 to 37:** Using yarn C.

**Row 38:** Using yarn A.

**Rows 39 and 40:** Using yarn B.

**Rows 41 and 42:** Using yarn A.

**Rows 43 to 45:** Using yarn C.

**Row 46:** Using yarn A.

**Rows 47 and 48:** Using yarn D.

**Rows 49 and 50:** Using yarn A.

**Rows 51 to 53:** Using yarn B.

**Row 54:** Using yarn A.

**Rows 55 to 58:** Using yarn D.

**Rows 59 to 61:** Using yarn A.

**Rows 62 and 63:** Using yarn C.

**Row 64:** Using yarn A.

**Rows 65 and 66:** Using yarn B.

**Rows 67 and 68:** Using yarn A.

**Rows 69 and 70:** Using yarn C.

**Rows 71 to 73:** Using yarn A.

**Rows 74 and 75:** Using yarn D.

**Row 76:** Using yarn A.

**Rows 77 to 80:** Using yarn B.

**Rows 81 and 82:** Using yarn A.

**Rows 83 and 84:** Using yarn D.

**Row 85:** Using yarn A.

**Rows 86 to 88:** Using yarn C.

**Rows 89 to 91:** Using yarn A.

**Rows 92 to 95:** Using yarn D.

**Rows 96 and 97:** Using yarn A.

**Rows 98 to 101:** Using yarn B.

**Rows 102 to 104:** Using yarn A.

**Rows 105 to 108:** Using yarn C.

**Rows 109 to 111:** Using yarn A.

**Rows 112 to 118:** Using yarn D.

**Rows 119 to 122:** Using yarn A.

**Rows 123 to 128:** Using yarn C.

**Rows 129 to 131:** Using yarn A.

**Rows 132 to 135:** Using yarn B.

Cast off (on WS).

### EDGE STRIPS (make 4)

Cast on 25 sts using 3¼mm (US 3) needles and yarn A.

Work in garter st for 522 rows, ending with a WS row.

Place marker at beg of last row.

Work a further 49 rows.

Cast off knitwise (on WS).

### MAKING UP

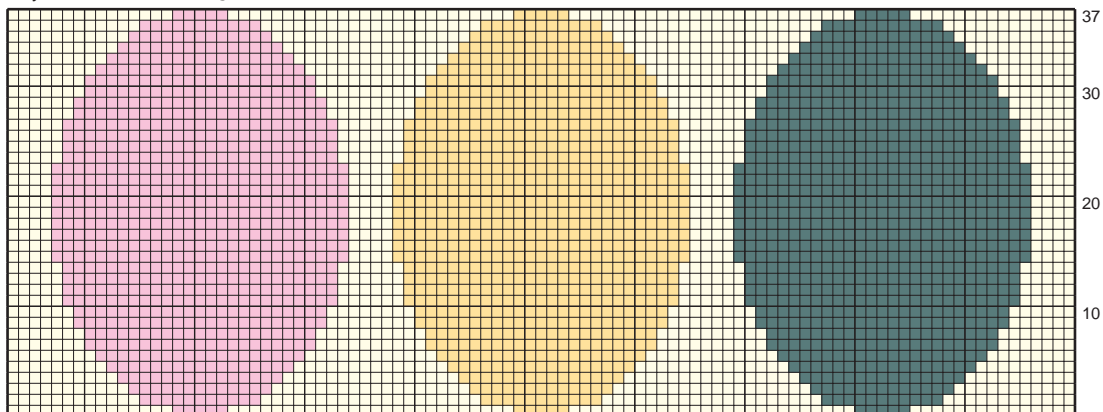
**PRESS** all pieces carefully using a warm iron over a damp cloth.

Join seams using back stitch, or mattress st if preferred.


Join spot and stripe panels to form 3 rows of 3 panels, alternating panels as in photograph.

Matching cast-on edge of strip and marker along strip to corners of joined panels, sew edge strips to sides of joined panels. Sew rem free edge of edge strip above marker to cast-on edge of adjacent edge strip.

Key □ A ■ B □ C □ D



ABBREVIATIONS					
<b>K</b>	knit	<b>rem</b>	remain(ing)	<b>WS</b>	wrong side
<b>P</b>	purl	<b>rev</b>	revers(e)(ing)	<b>sl1</b>	slip one sticth
<b>st(s)</b>	stitch(es)	<b>rep</b>	repeat	<b>pssso</b>	pass slipped stitch over
<b>inc</b>	increas(e)(ing)	<b>alt</b>	alternate	<b>tbl</b>	through back of loop
<b>dec</b>	decreas(e)(ing)	<b>cont</b>	continue	<b>M1</b>	make one stitch by picking up
<b>st st</b>	stocking stitch (1 row K, 1 row P)	<b>patt</b>	pattern		horizontal loop before next
<b>garter st</b>	garter stitch (K every row)	<b>tog</b>	together		stitch and knitting into back of it
<b>beg</b>	begin(ning)	<b>mm</b>	millimetres	<b>yfwd</b>	yarn forward
<b>fol</b>	following	<b>cm</b>	centimetres	<b>yrn</b>	yarn round needle
		<b>in(s)</b>	inch(es)	<b>yon</b>	yarn over needle
		<b>RS</b>	right side	<b>cn</b>	cable needle

R O  W A N

Published by Rowan, Green Lane Mill, Holmfirth, West Yorkshire, England HD9 2DX Tel: +44 (0)1484 681881

Internet: [www.knitrowan.com](http://www.knitrowan.com) Email: [mail@knitrowan.com](mailto:mail@knitrowan.com)

Copyright Rowan 2002